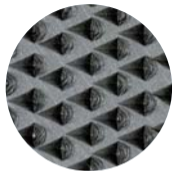
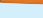
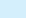



扁
HAND半圓
HAIF
ROUND圓
ROUND粗齒
Rasp Cut精加工齒
File Cut

■特長

- 扁銼  是木工類型（單面是精加工齒），半圓  是鉛工銼（兩面均為粗齒），圓銼  是粗齒。

■用途

- 既可作為木工教材，又可作為攜帶方便的野外工具使用。



■Use : For it's education as one of wood-working tools.

“Hand” File has file cut/Rasp cut.

“Half Round” File has Rasp cut in front and back side.

“Round” File has Rasp cut.

規格表 STANDARD TABLE

 mm	扁 HAND W × T mm	半圓 HALF ROUND W × T mm	圓 ROUND W mm
220	15.5 × 3.8	19.5 × 3.5	φ6
 kg-doz	1.3	1.3	0.6
ITEM No.	HI 22040	HA 22040	MA 22040